



ILLINOIS

STATE REPORT | 07.05.2020

SUMMARY

- Illinois is in the yellow zone for community transmission, with an increase in new cases and stability in testing positivity over the past week.
- The following three counties had the highest number of new cases over the past 3 weeks: 1. Cook County, 2. Lake County, and 3. DuPage County. These counties represent 63.0 percent of new cases in Illinois.
- Illinois had 43 new cases per 100,000 population in the past week, compared to a national average of 100 per 100,000.

RECOMMENDATIONS

- Ensure COVID-19 diagnostic testing continues to expand, specifically in Cook, Lake and DuPage counties. Utilize pooled specimen testing to test within specific neighborhoods.
- Continue testing in nursing homes with immediate action to protect vulnerable populations.
- Monitor activities at bars and restaurants if cases rise and adjust occupancy levels accordingly.
- Specific, detailed guidance on community mitigation measures can be found on the CDC website. <https://www.cdc.gov/coronavirus/2019-ncov/>

The purpose of this report is to develop a shared understanding of the current status of the pandemic at the national, regional, state and local levels. We recognize that data at the state level may differ from that available at the federal level. Our objective is to use consistent data sources and methods that allow for comparisons to be made across jurisdictions. We appreciate your continued support in identifying data discrepancies and improving data completeness and sharing across systems. We look forward to your feedback.



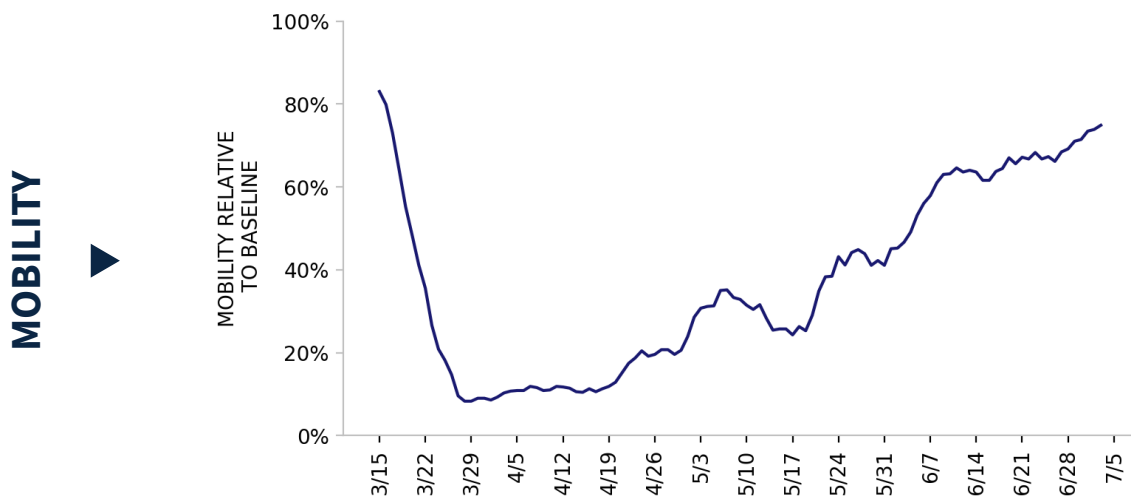
COVID-19



ILLINOIS

STATE REPORT | 07.05.2020

	STATE, LAST WEEK	STATE, % CHANGE FROM PREVIOUS WEEK	FEMA/HHS REGION, LAST WEEK	UNITED STATES, LAST WEEK
CONFIRMED CASES (RATE PER 100,000)	5,457 (43)	+13.1%	24,310 (46)	326,472 (100)
DIAGNOSTIC TEST POSITIVITY RATE	3.7%	-0.4%*	4.3%	8.3%
TOTAL DIAGNOSTIC TESTS (TESTS PER 100,000)	93,334 (733)	-46.8%	532,615 (1,014)	3,949,179 (1,207)
CONFIRMED COVID DEATHS (RATE PER 100,000)	158 (1)	-40.8%	525 (1)	6,254 (2)



* Indicates absolute change in percentage points

DATA SOURCES

Cases and Deaths: State values are calculated by aggregating county-level data from USAFacts; therefore, the values may not match those reported directly by the state. Data is through 7/3/2020; last week is 6/27 - 7/3, previous week is 6/20 - 6/26.

Testing: State-level values calculated by using 7-day rolling averages of reported tests. Regional- and national-level values calculated by using a combination of CELR (COVID-19 Electronic Lab Reporting) state health department-reported data and HHS Protect laboratory data (provided directly to Federal Government from public health labs, hospital labs, and commercial labs) through 7/1/2020. Last week is 6/25 - 7/1, previous week is 6/18 - 6/24.

Mobility: Descartes Labs. This data depicts the median distance moved across a collection of mobile devices to estimate the level of human mobility within a jurisdiction; 100% represents the baseline mobility level. Data is anonymized and provided at the county level. Data through 7/3/2020.



STATE REPORT | 07.05.2020

The chart displays the daily and 7-day average COVID-19 cases in the United States. The y-axis represents the number of cases, ranging from 0 to 4000. The x-axis shows the timeline from March 2020 to March 2021. The dark blue bars represent the daily reported cases, which show high volatility with several peaks, the highest reaching nearly 4000 cases in late 2020. The orange line represents the 7-day average, which smooths out the daily fluctuations and shows a major peak of approximately 2500 cases in late 2020, followed by a decline and a secondary, lower peak in early 2021.

COVID-19 TESTS

PERCENTAGE OF TOTAL TESTS

Daily Tests Completed (7 day avg.)

% Positivity Rate (by result date 7 day avg.)

Date	Daily Tests Completed (7 day avg.)	% Positivity Rate (by result date 7 day avg.)
March 1, 2020	~1,000	~10.0%
March 15, 2020	~4,000	~24.0%
March 25, 2020	~5,500	~23.0%
April 5, 2020	~12,000	~20.0%
April 15, 2020	~18,000	~14.0%
April 25, 2020	~20,000	~11.0%
May 5, 2020	~25,000	~4.0%
May 15, 2020	~13,000	~4.0%

[illegible]

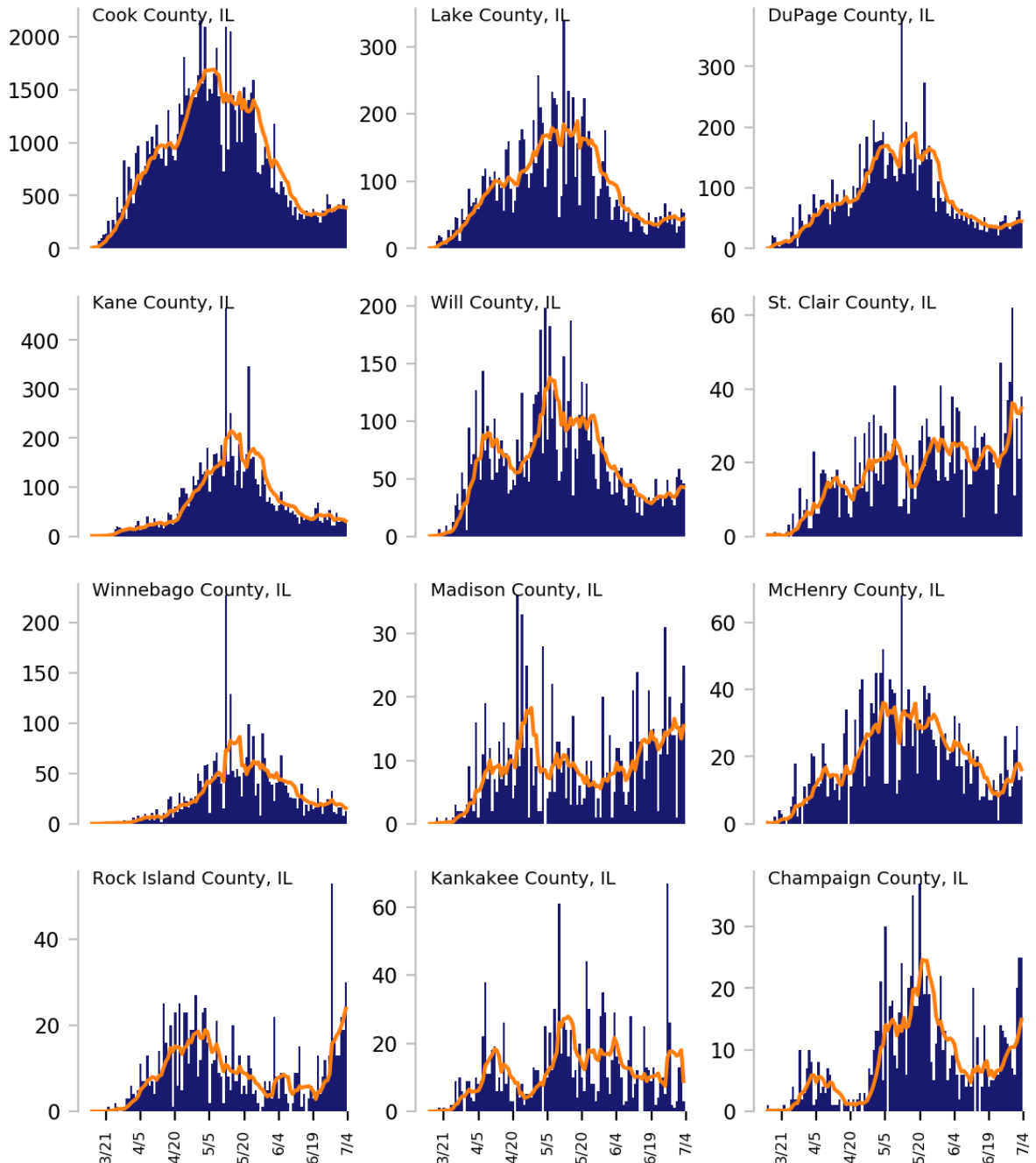
Testing: CELR (COVID-19 Electronic Lab Reporting) state health department-reported data through 7/1/2020.



Top 12 counties based on number of new cases in the last 3 weeks

— Daily COVID-19 Cases (7-day average) ■ Daily COVID-19 Cases

TOTAL DAILY CASES



DATA SOURCES

Cases: County-level data from USAFacts through 7/3/2020. Last 3 weeks is 6/13 - 7/3.

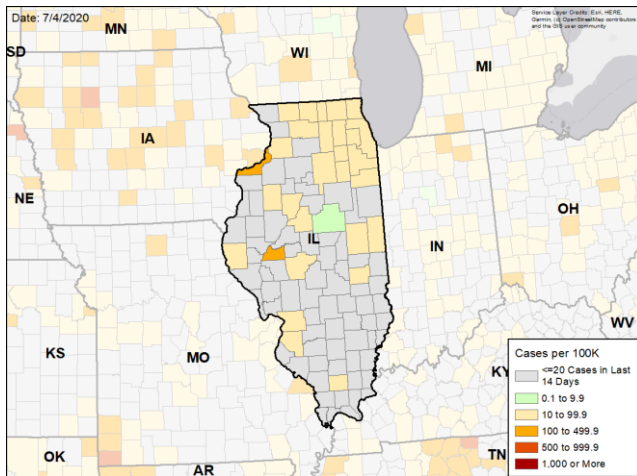


ILLINOIS

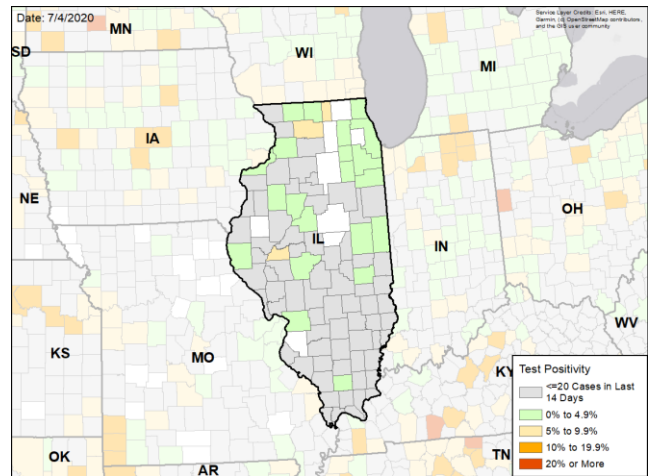
STATE REPORT | 07.05.2020

CASE RATES AND DIAGNOSTIC TEST POSITIVITY DURING THE LAST WEEK

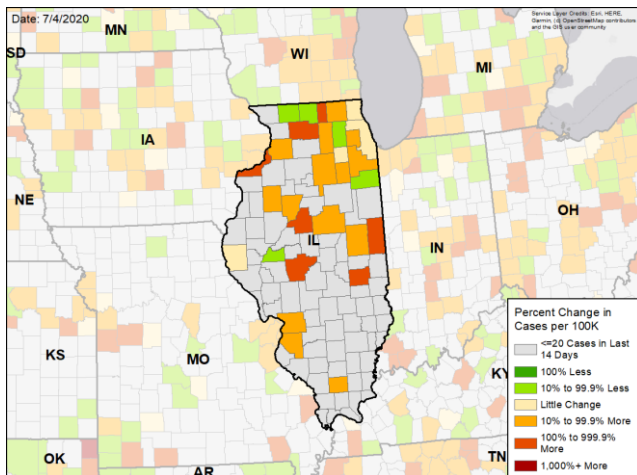
CASES PER 100,000 DURING LAST WEEK



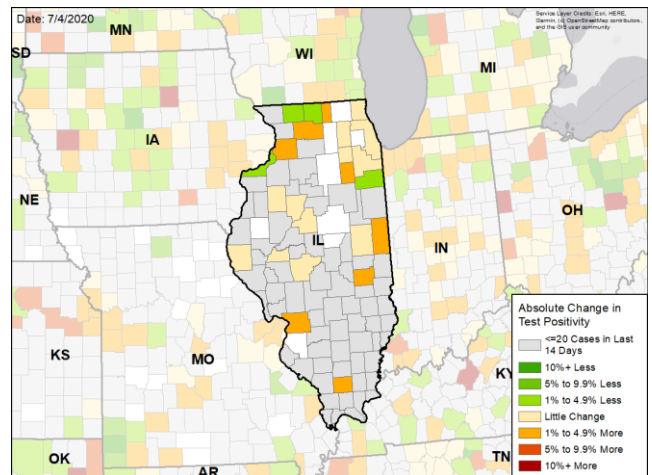
TEST POSITIVITY DURING LAST WEEK



WEEKLY % CHANGE IN CASES PER 100K



WEEKLY CHANGE IN TEST POSITIVITY



DATA SOURCES

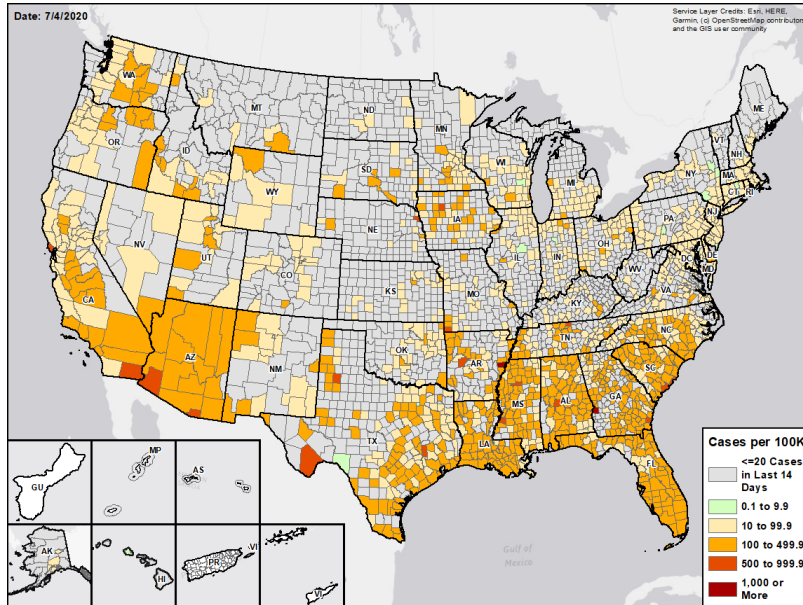
Cases: County-level data from USAFacts through 7/3/2020. Last week is 6/27 - 7/3, previous week is 6/20 - 6/26

Testing: CELR (COVID-19 Electronic Lab Reporting) state health department-reported data through 7/1/2020. Last week is 6/25 - 7/1, previous week is 6/18 - 6/24.

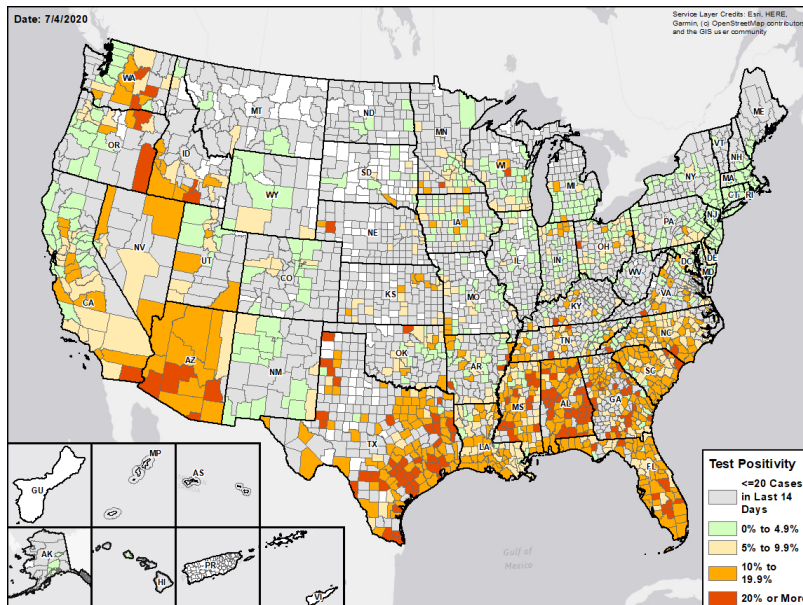


National Picture

CASES PER 100,000 LAST WEEK



TEST POSITIVITY LAST WEEK



DATA SOURCES

Cases: County-level data from USAFacts through 7/3/2020. Last week is 6/27 - 7/3

Testing: Combination of CELR (COVID-19 Electronic Lab Reporting) state health department-reported data and HHS Protect laboratory data (provided directly to Federal Government from public health labs, hospital labs, and commercial labs) through 7/1/2020. Last week is 6/25 - 7/1.



Methods

STATE REPORT | 07.05.2020

COLOR THRESHOLDS: Results for each indicator should be taken in context of the findings for related indicators (e.g., changes in case incidence and testing volume)

Metric	Green	Yellow	Red
Cases per 100,000 population per week	<10	10-100	>100
Percent change in cases per 100,000 population	<-10%	-10% - 10%	>10%
Diagnostic test result positivity rate	<5%	5%-10%	>10%
Change in test positivity	<-1%	-1%-1%	>1%
Total diagnostic tests resulted per 100,000 population per week	>1000	500-1000	<500
Percent change in tests per 100,000 population	>10%	-10% - 10%	<-10%
Confirmed COVID-19 deaths per 100,000 population per week	<0.5	0.5-2	>2
Percent change in deaths per 100,000 population	<-10%	-10% - 10%	>10%

DATA NOTES

- **Cases and deaths:** County-level data from USAFacts as of 12:45 EST on 07/05/2020. State values are calculated by aggregating county-level data from USAFacts; therefore, values may not match those reported directly by the state. Data are reviewed on a daily basis against internal and verified external sources and, if needed, adjusted. Last week data are from 6/27 to 7/3; previous week data are from 6/20 to 6/26.
- **Testing:** CELR (COVID-19 Electronic Lab Reporting) state health department-reported data are used to describe state-level totals when able to be disaggregated from serology test results and to describe county-level totals when information is available on patients' county of residence or healthcare providers' practice location. HHS Protect laboratory data (provided directly to Federal Government from public health labs, hospital labs, and commercial labs) are used otherwise. Some states did not report on certain days, which may affect the total number of tests resulted and positivity rate values. Total diagnostic tests are the number of tests performed, not the number of individuals tested. Diagnostic test positivity rate is the number of positive tests divided by the number of tests performed and resulted. Last week data are from 6/25 to 7/1; previous week data are from 6/18 to 6/24. CELR data is recent as of 23:00 EST on 07/03/2020; HHS Protect data as of 23:00 EST on 07/03/2020.
- **Mobility:** Descartes Labs. These data depict the median distance moved across a collection of mobile devices to estimate the level of human mobility within a jurisdiction; 100% represents the baseline mobility level. Data is recent as of 13:00 EST on 07/04/2020 and through 7/3/2020.