



ILLINOIS

STATE PROFILE REPORT

03.12.2021

This week's State Profile Report makes data for each state available in the same format that has been provided to state officials in previous weeks. The weekly State Profile Reports are currently under review. The format and content may change in coming reports.

Effective March 5, 2021, data incorporated in the State Profile Reports are now being finalized on Fridays. Data for this week's report is therefore current as of March 12, 2021.





ILLINOIS

STATE PROFILE REPORT | 03.12.2021

	STATE	STATE, % CHANGE FROM PREVIOUS WEEK	FEMA/HHS REGION	UNITED STATES		
NEW COVID-19 CASES (RATE PER 100,000)	11,149 (88)	-7%	50,374 (96)	464,152 (140)		
VIRAL (RT-PCR) LAB TEST POSITIVITY RATE	2.4%	-0.3%*	3.0%	4.1%		
TOTAL VIRAL (RT-PCR) LAB TESTS (TESTS PER 100,000)	365,319** (2,883**)	-6%**	1,445,136** (2,750**)	8,472,169** (2,552**)		
COVID-19 DEATHS (RATE PER 100,000)	220 (1.7)	-25%	1,409 (2.7)	10,133 (3.1)		
SNFs WITH ≥1 NEW RESIDENT COVID-19 CASE	5%†	+0%*	3%	5%		
SNFs WITH ≥1 NEW STAFF COVID-19 CASE	6%†	-2%*	8%	9%		
SNFs WITH ≥1 NEW RESIDENT COVID-19 DEATH	2%†	+0%*	2%	2%		
CONFIRMED AND SUSPECTED NEW COVID-19 HOSPITAL ADMISSIONS (RATE PER 100 BEDS)	3,216 (11)	-8% (-8%)	10,202 (9)	71,296 (10)		
CONFIRMED NEW COVID-19 HOSPITAL ADMISSIONS (RATE PER 100 BEDS)	911 (3)	-6% (-6%)	4,016 (3)	34,049 (5)		
NUMBER OF HOSPITALS WITH SUPPLY SHORTAGES (PERCENT)	5 (3%)	+0%	89 (10%)	360 (7%)		
NUMBER OF HOSPITALS WITH STAFF SHORTAGES (PERCENT)	11 (6%)	+10%	64 (7%)	678 (13%)		
COVID-19 VACCINE SUMMARY AS OF 3/12/2021	DOSES DELIVERED		RECEIVED AT LEAST ONE DOSE		FULLY VACCINATED	
	TOTAL	RATE PER 100,000	TOTAL	PERCENT OF POPULATION	TOTAL	PERCENT OF POPULATION
	5,044,435	39,808	2,603,710	20.5%	1,329,918	10.5%

* Indicates absolute change in percentage points.

** Due to delayed reporting, this figure may underestimate total diagnostic tests and week-on-week changes in diagnostic tests.

† 90% of facilities reported during the most current week.

DATA SOURCES

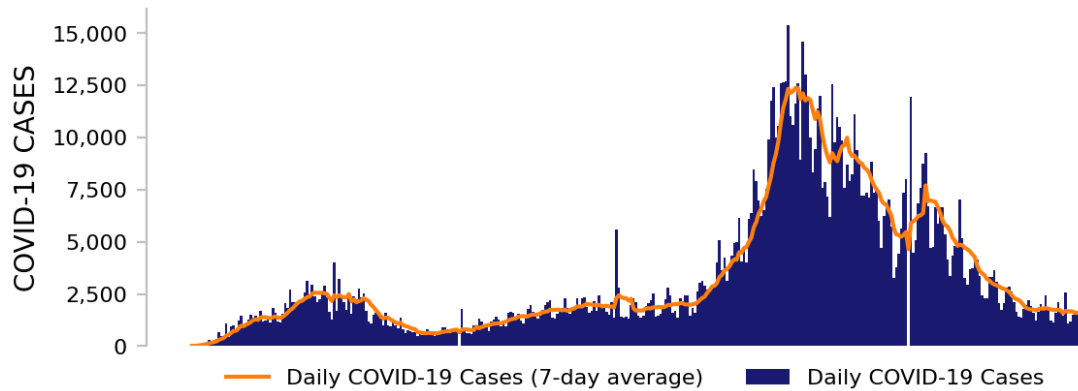
Note: Some dates may have incomplete data due to delays in reporting. Data may be backfilled over time, resulting in week-to-week changes.**Cases and Deaths:** State values are aggregated data provided by the states to the CDC. Data is through 3/11/2021; previous week is from 2/26 to 3/4.**Testing:** CELR (COVID-19 Electronic Lab Reporting) state health department-reported data. Test positivity through 3/9/2021; previous week is from 2/24 to 3/2. Test volume through 3/5/2021; previous week is from 2/20 to 2/26.**SNFs:** Skilled nursing facilities. National Healthcare Safety Network. Data is through 3/7/2021, previous week is from 2/22 to 2/28.**Admissions:** Unified Hospitals Dataset in HHS Protect. Data is through 3/10, previous week is from 2/25 to 3/3.**Shortages:** Unified Hospitals Dataset in HHS Protect. Values presented show the latest reports from hospitals in the week ending 3/10/2021 for staffing and the week ending 3/10/2021 for supplies.**Vaccinations:** [CDC COVID Data Tracker](#). Data includes the Moderna, Pfizer BioNTech, and J&J/Janssen COVID-19 vaccines and reflects current data available as of 14:21 EST on 03/12/2021. Data last updated 06:00 EST on 03/12/2021. Persons who are fully vaccinated include those who have received both doses of the Moderna or Pfizer-BioNTech vaccine as well as those who have received one dose of the J&J/Janssen vaccine. Allocations are made pro rata (equal based on population) from which jurisdictions are then to order. Currently, few persons under age 18 are being vaccinated; this group represents ~22% of the US population and the percentage varies by jurisdiction.**METHODS:** Details available on last page of report.



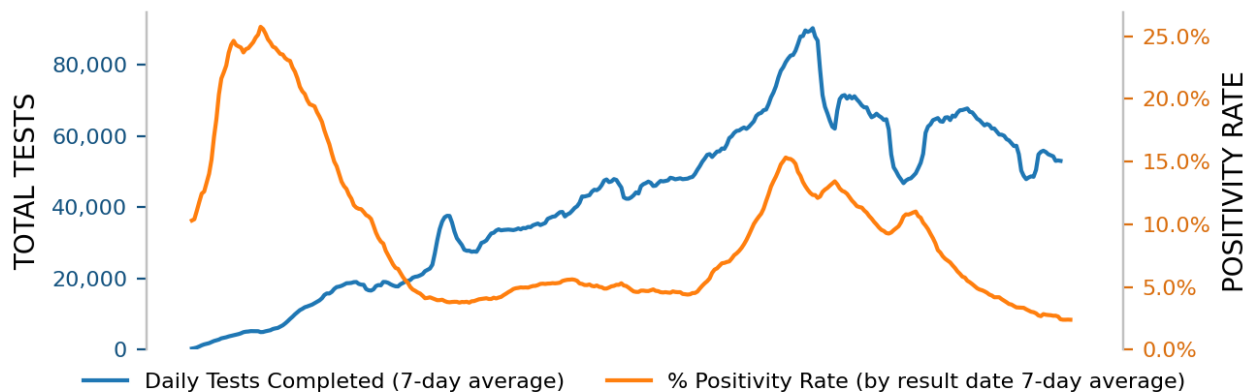
ILLINOIS

STATE PROFILE REPORT | 03.12.2021

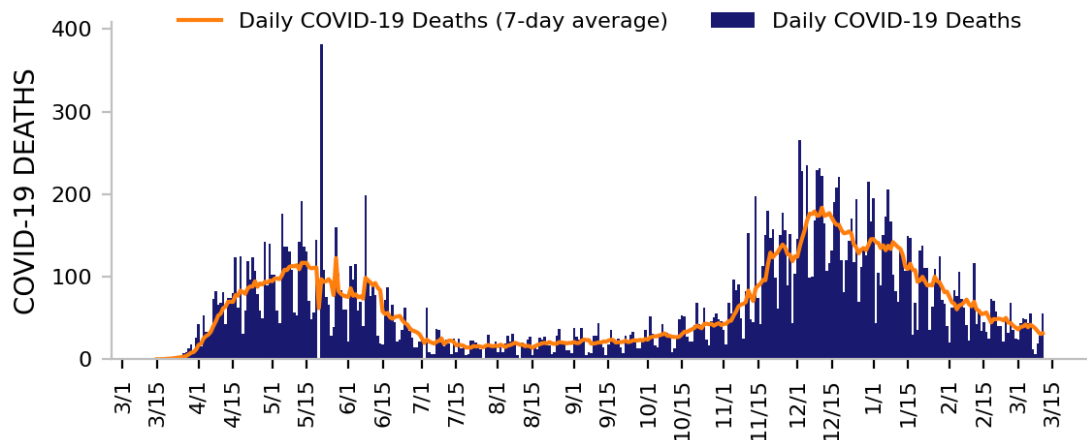
NEW CASES



TESTING



NEW DEATHS



DATA SOURCES

Note: Some dates may have incomplete data due to delays in reporting. Data may be backfilled over time, resulting in week-to-week changes.

Cases and Deaths: State values are aggregated data provided by the states to the CDC. Data is through 3/11/2021.

Testing: CELR (COVID-19 Electronic Lab Reporting) state health department-reported data. Test positivity through 3/9/2021. Test volume through 3/5/2021.

METHODS: Details available on last page of report.

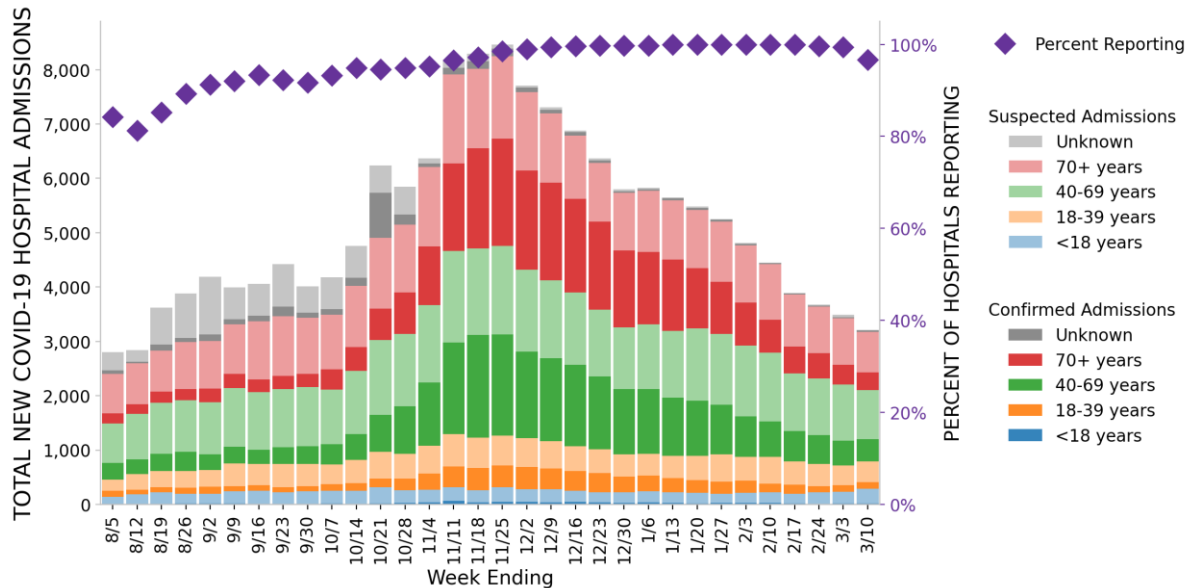


ILLINOIS

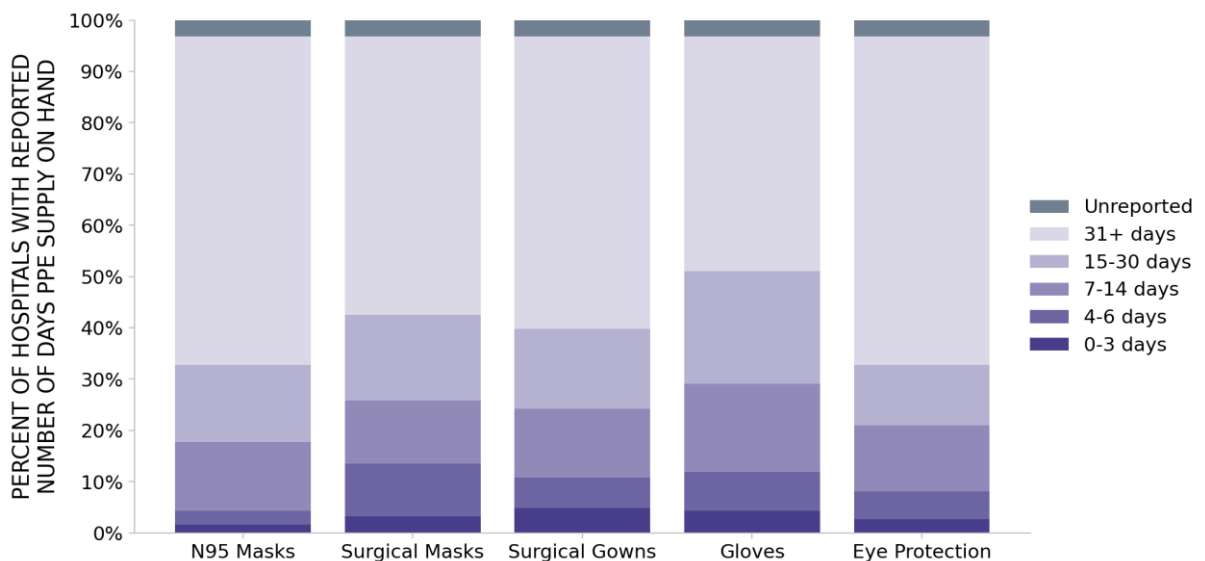
STATE PROFILE REPORT | 03.12.2021

186 hospitals are expected to report in Illinois

HOSPITAL ADMISSIONS



HOSPITAL PPE SUPPLIES



DATA SOURCES

Hospitalizations: Unified Hospitals Dataset in HHS Protect. These data exclude psychiatric, rehabilitation, and religious non-medical hospitals. Hospitals explicitly identified by states/regions as those from which we should not expect reports were excluded from the percent reporting figure. Data is through 3/10/2021.

PPE: Unified Hospitals Dataset in HHS Protect. These data exclude psychiatric, rehabilitation, and religious non-medical hospitals. Values presented show the latest reports from hospitals in the week ending 3/10/2021.

METHODS: Details available on last page of report.



ILLINOIS

STATE PROFILE REPORT | 03.12.2021

COVID-19 COUNTY AND METRO ALERTS*

Based on new cases and test positivity in the last week, top 12 shown in table (full lists below)

METRO AREA (CBSA)

COUNTIES

LOCALITIES IN RED ZONE	0 ■ (+0)	N/A	0 ■ (+0)	N/A
LOCALITIES IN ORANGE ZONE	0 ■ (+0)	N/A	0 ■ (+0)	N/A
LOCALITIES IN YELLOW ZONE	1 ▼ (-2)	Rochelle	7 ▼ (-3)	St. Clair Madison Grundy Ogle Massac Shelby Cumberland
Change from previous week's alerts: ▲ Increase ■ Stable ▼ Decrease				

* Localities with fewer than 10 cases last week have been excluded from these alerts.

Note: Lists of red, orange, and yellow localities are sorted by the number of new cases in the last 3 weeks, from highest to lowest. Some dates may have incomplete data due to delays in reporting. Data may be backfilled over time, resulting in week-to-week changes.

DATA SOURCES

Cases: CBSA and county values are calculated by aggregating county-level data from a CDC-managed dataset compiled from state and local health departments; therefore, the values may not match those reported directly by the state. Data is through 3/11/2021.

Testing: CELR (COVID-19 Electronic Lab Reporting) state health department-reported data through 3/9/2021.

METHODS: Details available on last page of report.

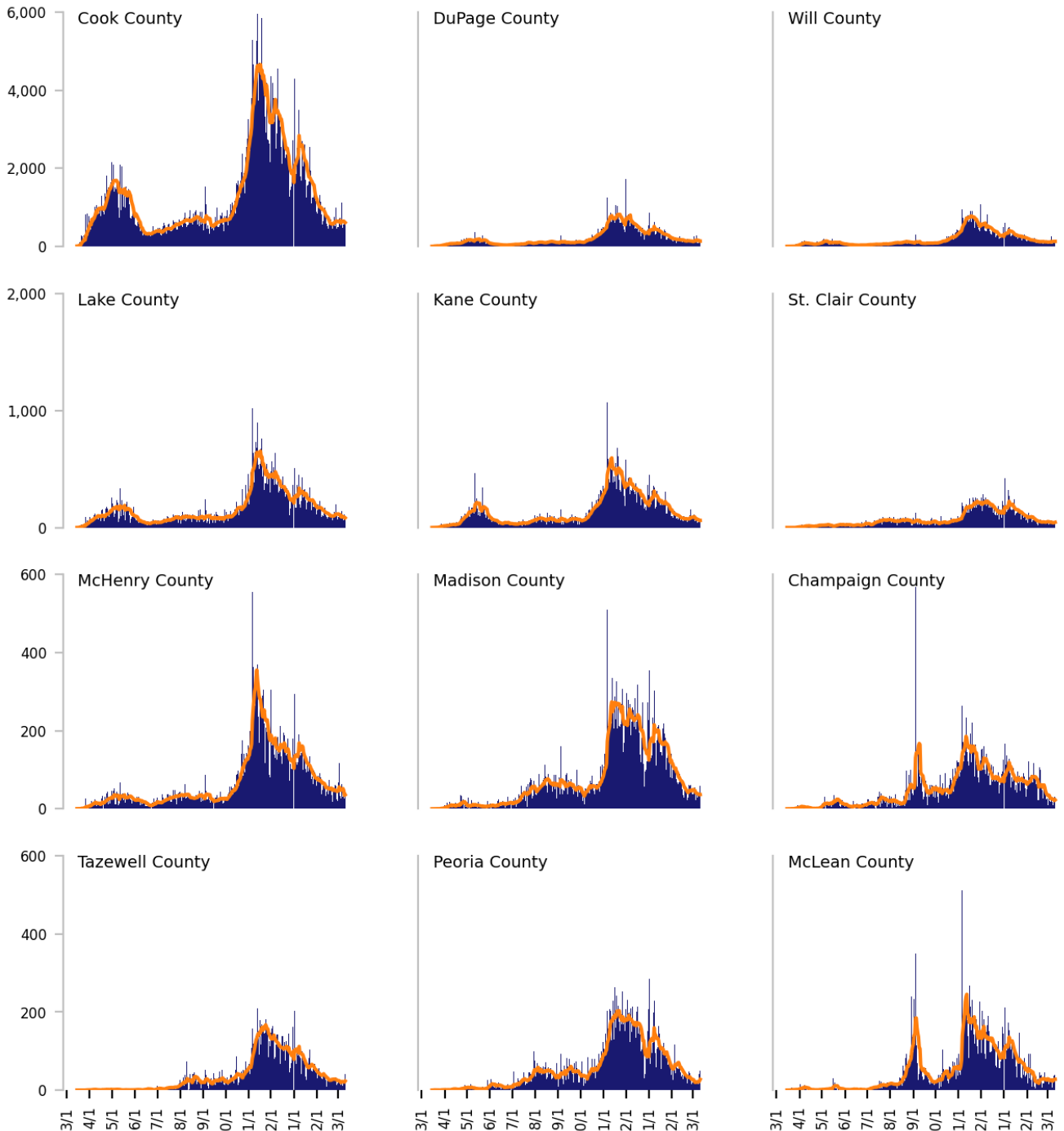


Top 12 counties based on number of new cases in the last 3 weeks

The scale is fixed per row based on the historical peak number of daily cases*

— Daily COVID-19 Cases (7-day average) ■ Daily COVID-19 Cases

TOTAL DAILY CASES



* The vertical scale of plots is fixed per row based on the historical peak number of daily cases; use caution when comparing visuals across different rows.

DATA SOURCES

Cases: County-level data is from a CDC managed aggregate county dataset compiled from state and local health departments; therefore, the values may not match those reported directly by the state. Data is through 3/11/2021. Last 3 weeks is from 2/19 to 3/11. Counties are listed in order of the number of cases in the last three weeks, from largest to smallest.

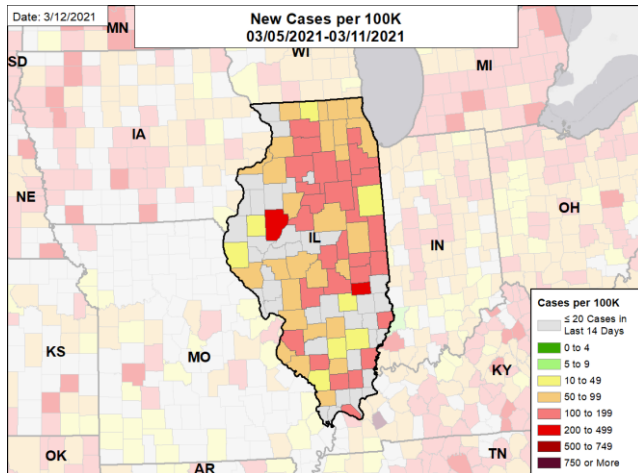
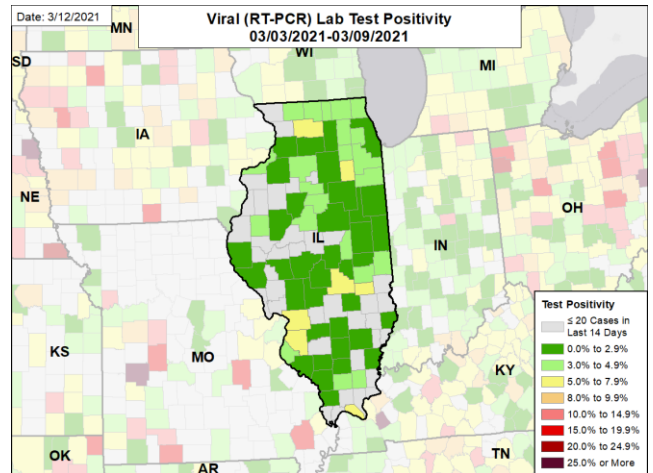
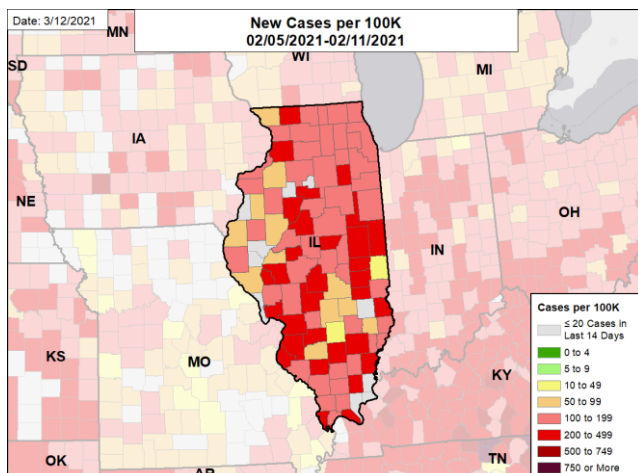
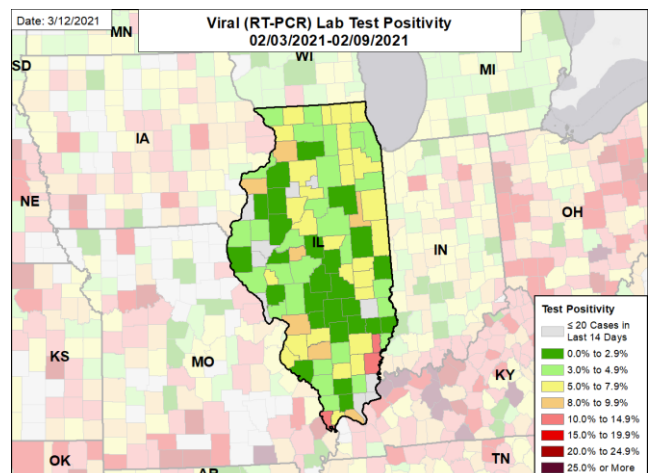
METHODS: Details available on last page of report.



ILLINOIS

STATE PROFILE REPORT | 03.12.2021

CASE RATES AND VIRAL LAB TEST POSITIVITY

NEW CASES PER 100,000**VIRAL (RT-PCR) LABORATORY TEST POSITIVITY****NEW CASES PER 100,000 ONE MONTH BEFORE****VIRAL (RT-PCR) LABORATORY TEST POSITIVITY ONE MONTH BEFORE**

DATA SOURCES

Note: Some dates may have incomplete data due to delays in reporting. Data may be backfilled over time, resulting in week-to-week changes.

Cases: County-level data is from a CDC managed aggregate county dataset compiled from state and local health departments; therefore, the values may not match those reported directly by the state. Data is through 3/11/2021. The week one month before is from 2/5 to 2/11.

Testing: CELR (COVID-19 Electronic Lab Reporting) state health department-reported data through 3/9/2021. The week one month before is from 2/3 to 2/9.

METHODS: Details available on last page of report.

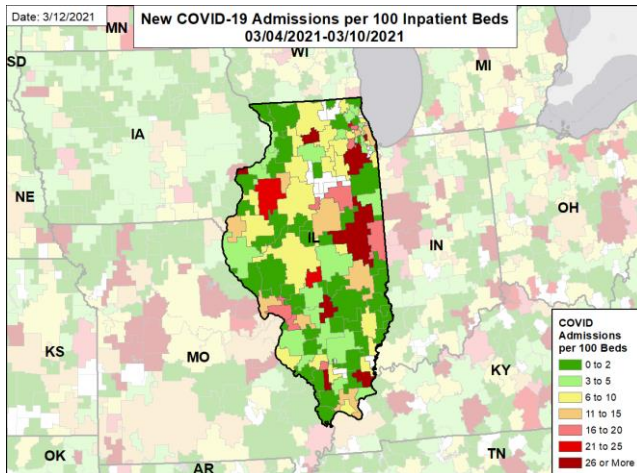


ILLINOIS

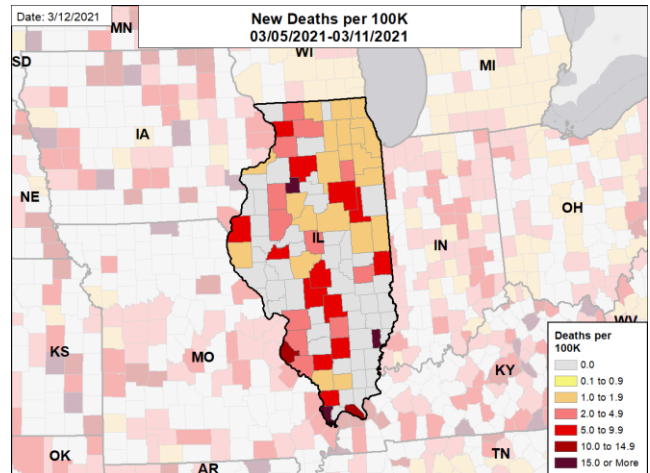
STATE PROFILE REPORT | 03.12.2021

HOSPITAL ADMISSIONS AND DEATH RATES

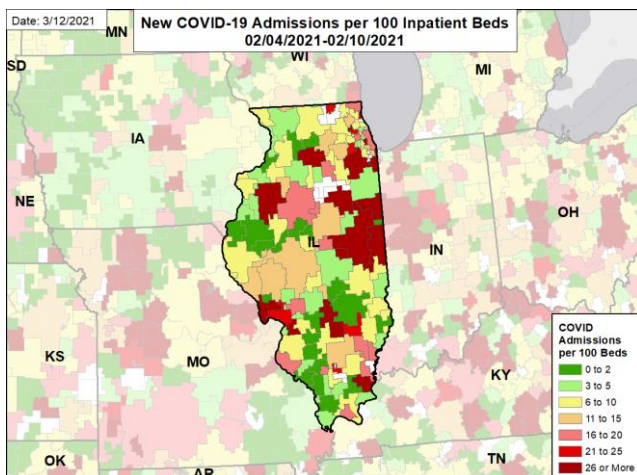
CONFIRMED AND SUSPECTED NEW COVID-19 ADMISSIONS PER 100 INPATIENT BEDS



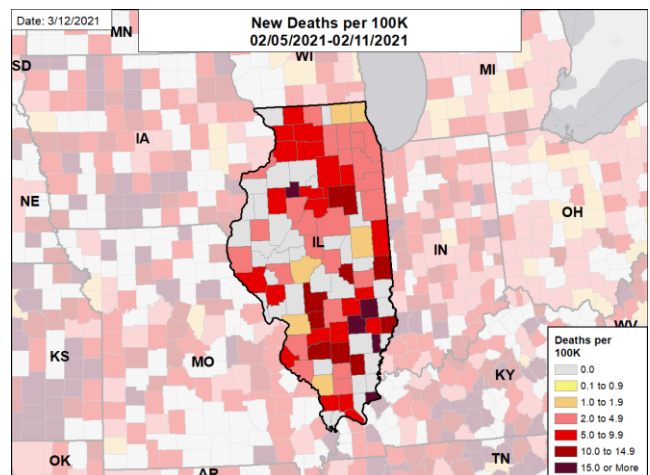
NEW DEATHS PER 100,000



CONFIRMED AND SUSPECTED NEW COVID-19 ADMISSIONS PER 100 INPATIENT BEDS ONE MONTH BEFORE



NEW DEATHS PER 100,000 ONE MONTH BEFORE



DATA SOURCES

Note: Some dates may have incomplete data due to delays in reporting. Data may be backfilled over time, resulting in week-to-week changes.

Deaths: County-level data is from a CDC managed aggregate county dataset compiled from state and local health departments; therefore, the values may not match those reported directly by the state. Data is through 3/11/2021. The week one month before is from 2/5 to 2/11.

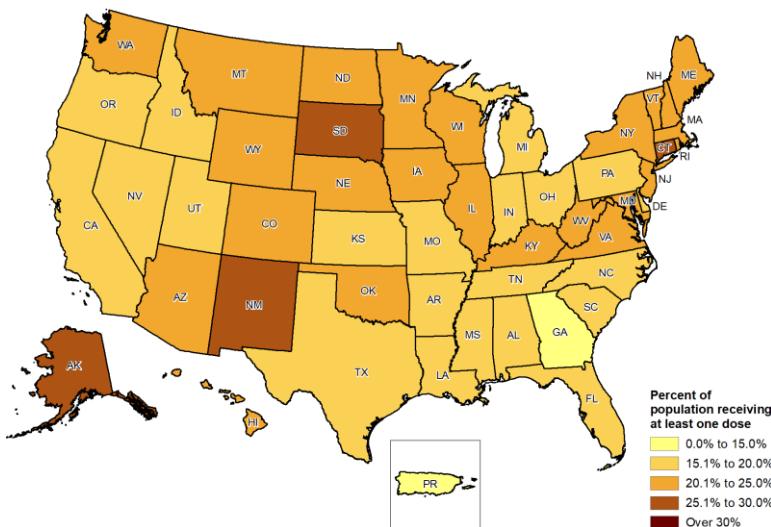
Hospitalizations: Unified Hospitals Dataset in HHS Protect. Totals include confirmed and suspected COVID-19 admissions. Data is through 3/10/2021. The week one month before is from 2/4 to 2/10.

METHODS: Details available on last page of report.

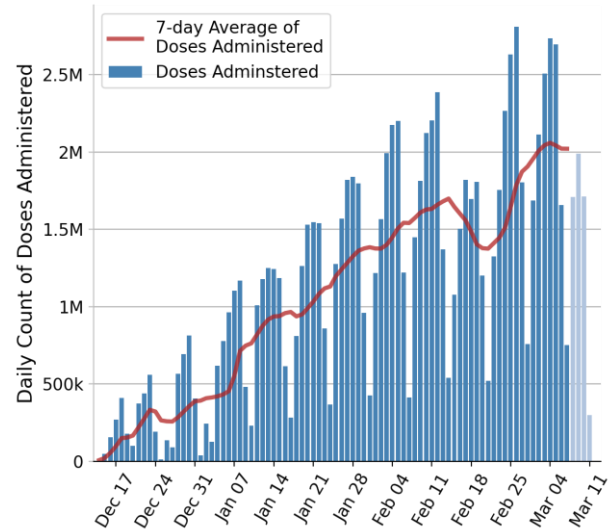


National Picture

PERCENT OF POPULATION RECEIVING 1 OR MORE VACCINE DOSES



DAILY NATIONAL COUNT OF VACCINE DOSES ADMINISTERED BY DATE OF ADMINISTRATION



NATIONAL COVID-19 VACCINE SUMMARY AS OF 3/12/2021

DOSES DELIVERED

TOTAL RATE PER 100,000

133,337,525 40,162

PEOPLE RECEIVED AT LEAST ONE DOSE

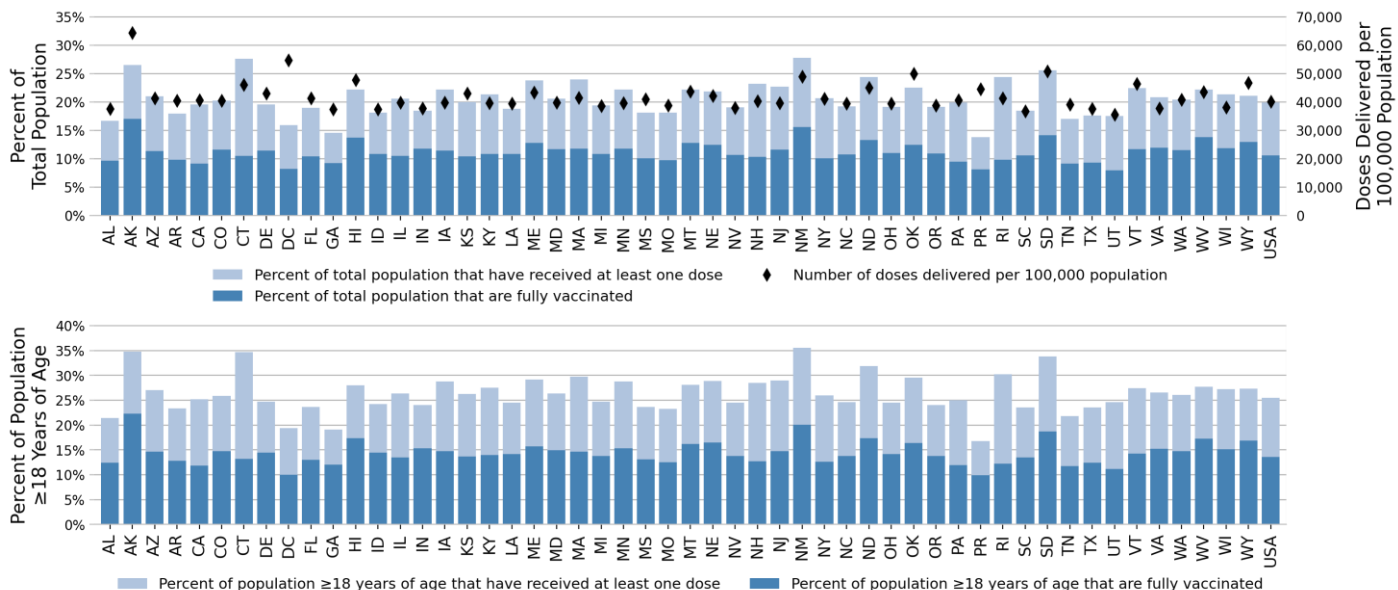
TOTAL PCT OF POPULATION

65,965,305 19.9%

PEOPLE FULLY VACCINATED

TOTAL PCT OF POPULATION

35,000,159 10.5%



DATA SOURCES

Hospital, testing, and vaccination data from 2/15/2021 to 3/5/2021 in HHS Region 6 may be less complete due to winter storms and widespread power outages.

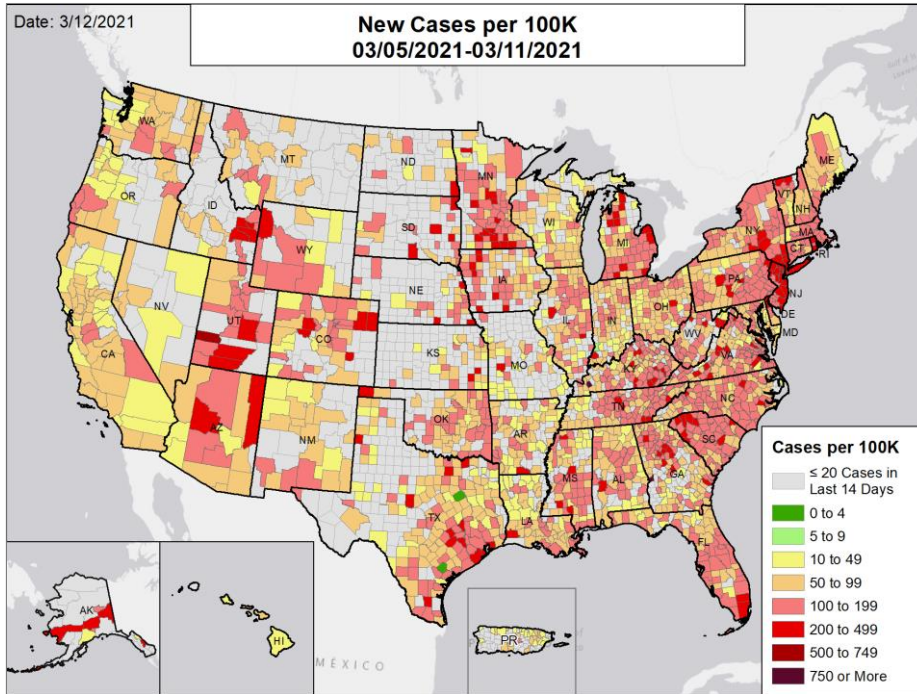
Vaccinations: [CDC COVID Data Tracker](#). Data includes the Moderna, Pfizer BioNTech, and J&J/Janssen COVID-19 vaccines and reflects current data available as of 14:21 EST on 03/12/2021. Data last updated 06:00 EST on 03/12/2021. Persons who are fully vaccinated include those who have received both doses of the Moderna or Pfizer-BioNTech vaccine as well as those who have received one dose of the J&J/Janssen vaccine. Allocations are made pro rata (equal based on population) from which jurisdictions are then to order. Currently, few persons under age 18 are being vaccinated; this group represents ~22% of the US population and the percentage varies by jurisdiction. Due to delays in reporting, data on doses administered in recent days (as reflected by lighter blue coloring in the Daily National Count figure) may be an underestimate of the actual value.

METHODS: Details available on last page of report.



National Picture

NEW CASES PER 100,000

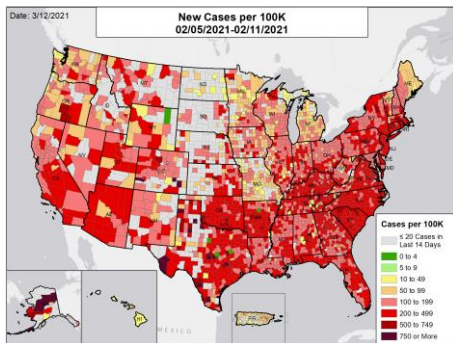


NATIONAL RANKING OF NEW CASES PER 100,000

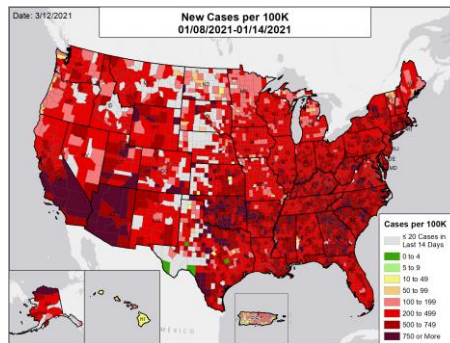
National Rank	State	National Rank	State
1	MO	27	MS
2	NJ	28	IA
3	NY	29	WV
4	RI	30	SC
5	DE	31	MD
6	DC	32	NE
7	FL	33	OH
8	CT	34	ME
9	MA	35	IL
10	PA	36	NV
11	VT	37	AL
12	AZ	38	IN
13	AK	39	MT
14	KY	40	AR
15	TN	41	ND
16	MI	42	NM
17	CO	43	WY
18	SD	44	LA
19	GA	45	KS
20	MN	46	CA
21	NH	47	WI
22	UT	48	WA
23	TX	49	OK
24	ID	50	OR
25	NC	51	PR
26	VA	52	HI

NEW CASES PER 100,000 IN THE WEEK:

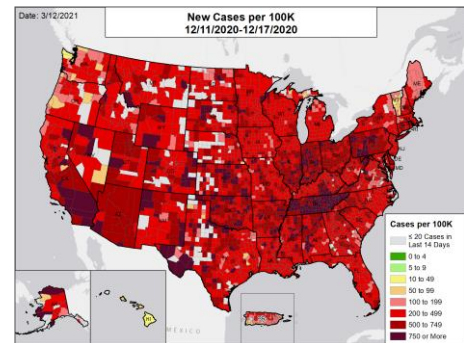
ONE MONTH BEFORE



TWO MONTHS BEFORE



THREE MONTHS BEFORE



DATA SOURCES

Hospital, testing, and vaccination data from 2/15/2021 to 3/5/2021 in HHS Region 6 may be less complete due to winter storms and widespread power outages.

Note: Some dates may have incomplete data due to delays in reporting. Data may be backfilled over time, resulting in week-to-week changes.

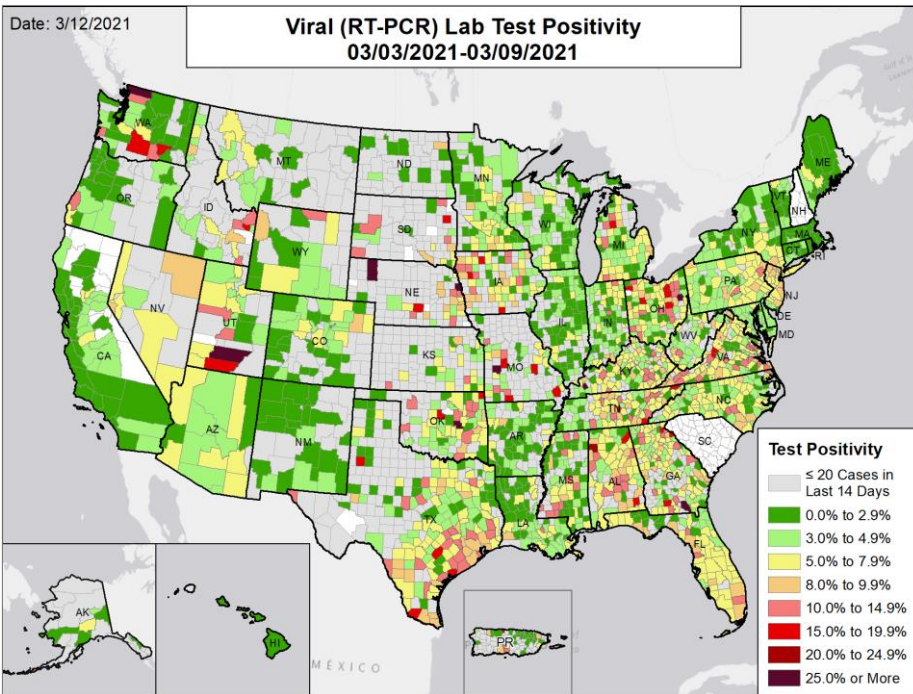
Cases: County-level data is from a CDC managed aggregate county dataset compiled from state and local health departments; therefore, the values may not match those reported directly by the state. State values are aggregated data provided by the states to the CDC. The week one month before is from 2/5 to 2/11; the week two months before is from 1/8 to 1/14; the week three months before is from 12/11 to 12/17. Minnesota reported a historical backlog of 891 cases; these are shown by date of report to CDC on 3/9.

METHODS: Details available on last page of report.



National Picture

VIRAL (RT-PCR) LAB TEST POSITIVITY

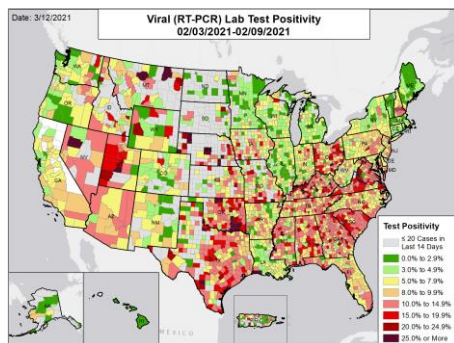


NATIONAL RANKING OF TEST POSITIVITY

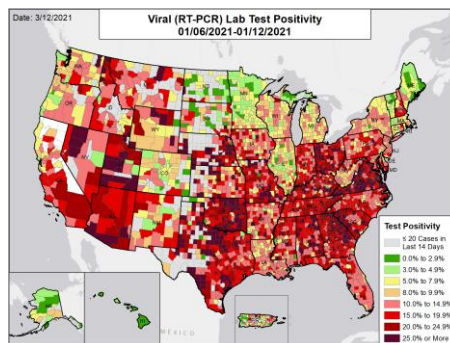
National Rank	State	National Rank	State
1	NJ	27	KS
2	NE	28	MD
3	FL	29	PR
4	TX	30	MN
5	SD	31	CO
6	NV	32	OH
7	TN	33	IN
8	ID	34	LA
9	AL	35	CT
10	KY	36	AR
11	OK	37	DC
12	IA	38	ME
13	VA	39	IL
14	GA	40	NM
15	UT	41	WY
16	PA	42	WI
17	NY	43	AK
18	NC	44	CA
19	MO	45	RI
20	AZ	46	OR
21	WV	47	VT
22	MS	48	ND
23	WA	49	MA
24	MI	50	HI
25	DE	--	NH
26	MT	--	SC

VIRAL (RT-PCR) LAB TEST POSITIVITY IN THE WEEK:

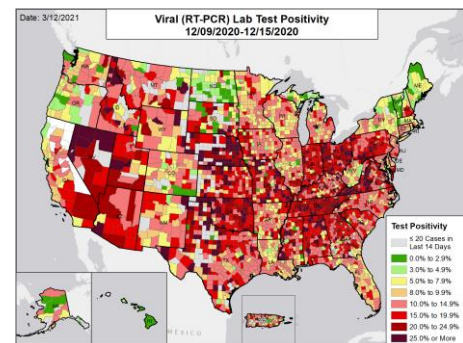
ONE MONTH BEFORE



TWO MONTHS BEFORE



THREE MONTHS BEFORE



DATA SOURCES

Hospital, testing, and vaccination data from 2/15/2021 to 3/5/2021 in HHS Region 6 may be less complete due to winter storms and widespread power outages.

Note: Some dates may have incomplete data due to delays in reporting. Data may be backfilled over time, resulting in week-to-week changes.

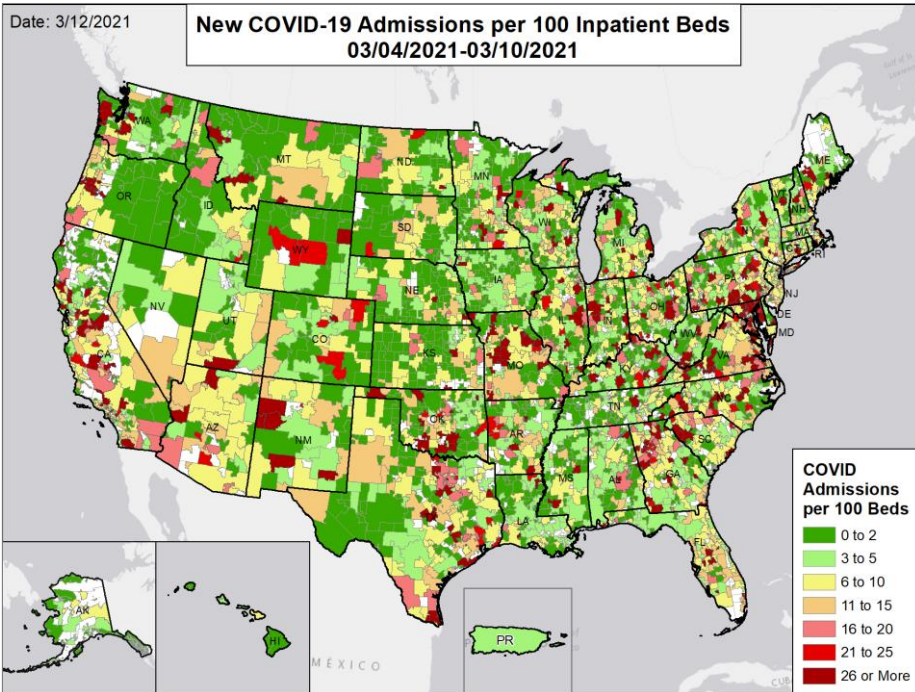
Testing: Combination of CELR (COVID-19 Electronic Lab Reporting) state health department-reported data and HHS Protect laboratory data (provided directly to Federal Government from public health labs, hospital labs, and commercial labs) through 3/9/2021. The week one month before is from 2/3 to 2/9; the week two months before is from 1/6 to 1/12; the week three months before is from 12/9 to 12/15. There are discrepancies between federal and state data on New Hampshire's and South Carolina's test positivity. These differences are being investigated.

METHODS: Details available on last page of report



National Picture

CONFIRMED AND SUSPECTED NEW COVID-19 ADMISSIONS PER 100 INPATIENT BEDS

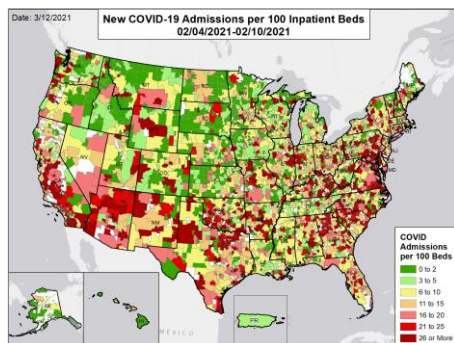


NATIONAL RANKING OF CONFIRMED AND SUSPECTED ADMISSIONS PER 100 BEDS

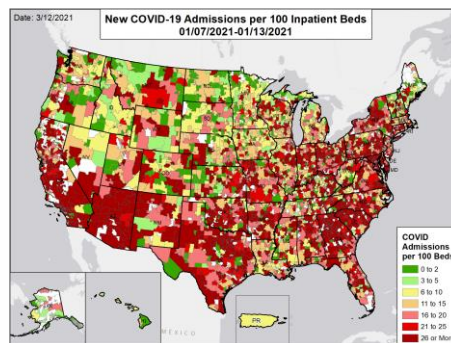
National Rank	State	National Rank	State
1	DC	27	NC
2	MD	28	NH
3	PA	29	CO
4	GA	30	MT
5	VA	31	ND
6	KY	32	MA
7	NJ	33	WA
8	AZ	34	VT
9	TX	35	ME
10	MO	36	NM
11	DE	37	MI
12	IL	38	KS
13	WV	39	NE
14	OH	40	WI
15	NV	41	MN
16	NY	42	TN
17	CT	43	RI
18	SC	44	MS
19	CA	45	UT
20	FL	46	SD
21	OR	47	ID
22	OK	48	LA
23	AR	49	IA
24	WY	50	AK
25	IN	51	HI
26	AL	52	PR

CONFIRMED AND SUSPECTED NEW COVID-19 ADMISSIONS PER 100 INPATIENT BEDS IN THE WEEK:

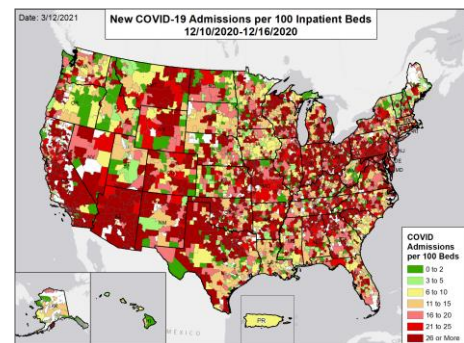
ONE MONTH BEFORE



TWO MONTHS BEFORE



THREE MONTHS BEFORE



DATA SOURCES

Hospital, testing, and vaccination data from 2/15/2021 to 3/5/2021 in HHS Region 6 may be less complete due to winter storms and widespread power outages.

Note: Some dates may have incomplete data due to delays in reporting. Data may be backfilled over time, resulting in week-to-week changes.

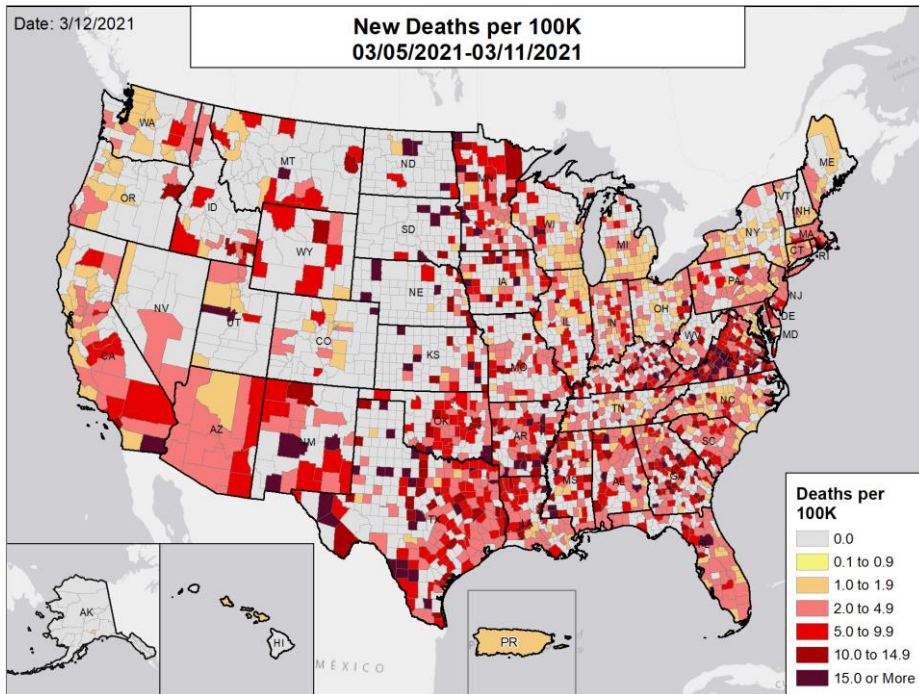
Admissions: Unified Hospitals Dataset in HHS Protect through 3/10/2021. Totals include confirmed and suspected COVID-19 admissions. The week one month before is from 2/4 to 2/10; the week two months before is from 1/7 to 1/13; the week three months before is from 12/10 to 12/16.

METHODS: Details available on last page of report



National Picture

NEW DEATHS PER 100,000

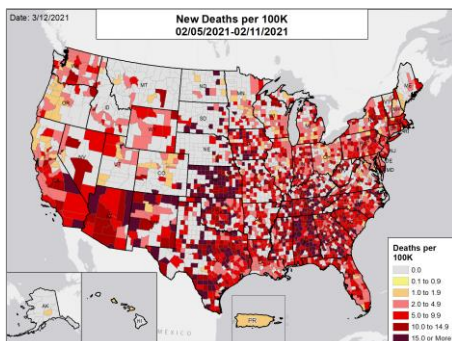


NATIONAL RANKING OF NEW DEATHS PER 100,000

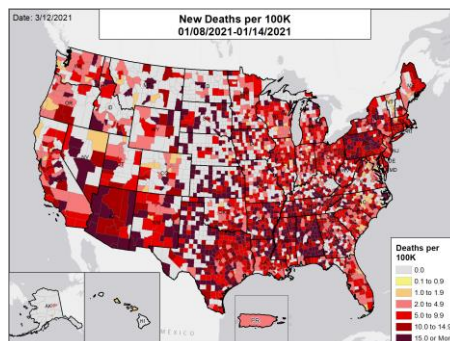
National Rank	State	National Rank	State
1	VA	27	DC
2	OH	28	CT
3	DE	29	TN
4	CA	30	IL
5	AR	31	ID
6	TX	32	MD
7	KY	33	WV
8	AZ	34	UT
9	AL	35	WY
10	MA	36	MT
11	NJ	37	SC
12	NM	38	ME
13	MN	39	WI
14	GA	40	MI
15	MS	41	KS
16	NY	42	SD
17	LA	43	WA
18	FL	44	NH
19	OK	45	ND
20	IA	46	CO
21	NV	47	OR
22	MO	48	VT
23	RI	49	NE
24	NC	50	PR
25	PA	51	HI
26	IN	52	AK

NEW DEATHS PER 100,000 IN THE WEEK:

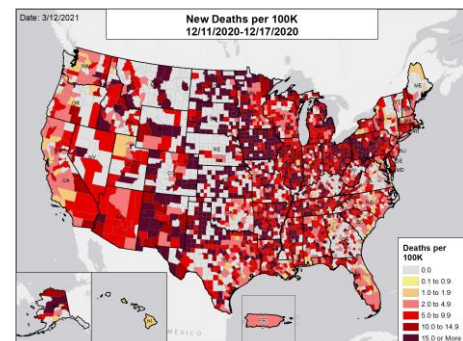
ONE MONTH BEFORE



TWO MONTHS BEFORE



THREE MONTHS BEFORE



DATA SOURCES

Hospital, testing, and vaccination data from 2/15/2021 to 3/5/2021 in HHS Region 6 may be less complete due to winter storms and widespread power outages.

Note: Some dates may have incomplete data due to delays in reporting. Data may be backfilled over time, resulting in week-to-week changes.

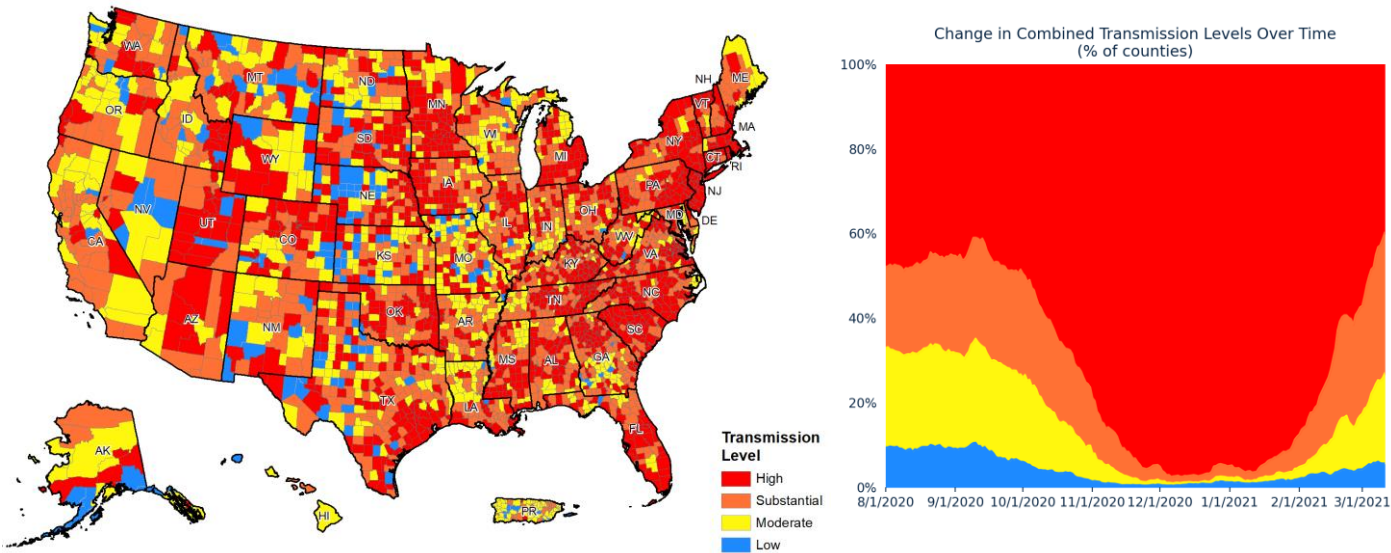
Deaths: County-level data is from a CDC managed aggregate county dataset compiled from state and local health departments; therefore, the values may not match those reported directly by the state. State values are aggregated data provided by the states to the CDC. The week one month before is from 2/5 to 2/11; the week two months before is from 1/8 to 1/14; the week three months before is from 12/11 to 12/17. Minnesota reported a historical backlog of 138 deaths; these are shown by date of report to CDC on 3/9. As of 3/2/2021, Ohio changed their method of reporting COVID-19 deaths and will only report twice per week; they will report deaths on the day of death, not the day of report, which could result in a fluctuation in the number of deaths from recent weeks due to delayed reporting. Virginia is currently undergoing an audit of death counts, resulting in an increase in the number of reported deaths starting on 2/19. These will be back-distributed once historical data is provided.

METHODS: Details available on last page of report.



National Picture

COMMUNITY TRANSMISSION BY COUNTY



COUNTIES BY COMMUNITY TRANSMISSION INDICATOR

CASES PER 100K	0 TO 9	10 TO 49	50 TO 99	100 +
# OF COUNTIES (CHANGE)	198 (↑8)	738 (↑198)	1131 (↑101)	1153 (↓307)
% OF COUNTIES (CHANGE)	6.1% (↑0.2%)	22.9% (↑6.1%)	35.1% (↑3.1%)	35.8% (↓9.5%)
TEST POSITIVITY	0.0% TO 4.9%	5.0% TO 7.9%	8.0% TO 9.9%	10.0% +
# OF COUNTIES (CHANGE)	1938 (↑280)	745 (↓49)	214 (↓99)	323 (↓132)
% OF COUNTIES (CHANGE)	60.2% (↑8.7%)	23.1% (↓1.5%)	6.6% (↓3.1%)	10.0% (↓4.1%)

COUNTIES BY COMBINED TRANSMISSION LEVEL

CATEGORY	LOW TRANSMISSION BLUE	MODERATE TRANSMISSION YELLOW	SUBSTANTIAL TRANSMISSION ORANGE	HIGH TRANSMISSION RED
# OF COUNTIES (CHANGE)	181 (↑6)	685 (↑208)	1071 (↑117)	1283 (↓331)
% OF COUNTIES (CHANGE)	5.6% (↑0.2%)	21.3% (↑6.5%)	33.3% (↑3.6%)	39.8% (↓10.3%)

Hospital, testing, and vaccination data from 2/15/2021 to 3/5/2021 in HHS Region 6 may be less complete due to winter storms and widespread power outages.

DATA SOURCES

Maps and figures reflect 7-day average of data from 3/5-3/11 (cases), 3/3-3/9 (tests).

Note: Most recent days may have incomplete reporting.

Cases: County-level data is from a CDC managed aggregate county dataset compiled from state and local health departments; therefore, the values may not match those reported directly by the state. Data is through 3/11/2021. Minnesota reported a historical backlog of 891 cases; these are shown by date of report to CDC on 3/9.

Testing: Combination of CELR (COVID-19 Electronic Lab Reporting) state health department-reported data and HHS Protect laboratory data (provided directly to Federal Government from public health labs, hospital labs, and commercial labs). Data is through 3/9/2021. There are discrepancies between federal and state data on New Hampshire's and South Carolina's test positivity. These differences are being investigated.

County Percentages: Based on a denominator of 3,220 county/county-equivalents, including states, the District of Columbia, and Puerto Rico municipalities.

Combined Transmission Level: If the two indicators suggest different transmission levels, the higher level is selected. See [CDC COVID Data Tracker](#).

METHODS: Details available on last page of report.



METHODS

STATE PROFILE REPORT | 03.12.2021

Metric	Dark Green	Light Green	Yellow	Orange	Light Red	Red	Dark Red	Darkest Red
*New cases per 100,000 population per week	≤4	5 – 9	10 – 49	50 – 99	100 – 199	200 – 499	500 – 749	≥750
Percent change in new cases per 100,000 population	≤-26%	-25% – -11%	-10% – 0%	1% – 10%	11% – 99%	100% – 999%	≥1000%	
*Diagnostic test result positivity rate	≤2.9%	3.0% – 4.9%	5.0% – 7.9%	8.0% – 9.9%	10.0% – 14.9%	15.0% – 19.9%	20.0% – 24.9%	≥25.0%
Change in test positivity	≤-2.1%	-2.0% – -0.6%	-0.5% – 0.0%	0.1% – 0.5%	0.6% – 2.0%		≥2.1%	
Total diagnostic tests resulted per 100,000 population per week	≥5000	3000 – 4999	2000 – 2999	1000 – 1999	500 – 999		≤499	
Percent change in tests per 100,000 population	≥26%	11% – 25%	1% – 10%	-10% – 0%	-25% – -11%		≤-26%	
*COVID-19 deaths per 100,000 population per week	0.0		0.1 – 0.9	1.0 – 1.9	2.0 – 4.9	5.0 – 9.9	10.0 – 14.9	≥15.0
Percent change in deaths per 100,000 population	≤-26%	-25% – -11%	-10% – 0%	1% – 10%	11% – 25%		≥26%	
Skilled Nursing Facilities with at least one resident COVID-19 case, death	0%		1% – 5%		≥6%			
Change in SNFs with at least one resident COVID-19 case, death	≤-2%		-1% – 1%		≥2%			
Confirmed and suspected new COVID-19 hospital admissions per 100 beds	≤2	3 – 5	6 – 10	11 – 15	16 – 20	21 – 25	≥26	
Confirmed new COVID-19 hospital admissions per 100 beds	≤1	2 – 3	4 – 5	6 – 10	11 – 15	16 – 20	≥21	
Change in new COVID-19 hospital admissions per 100 beds	≤-26%	-25% – -11%	-10% – 0%	1% – 10%	11% – 25%		≥26%	
Percent of hospitals with supply/staff shortages	≤9%		10% – 19%	20% – 29%	30% – 39%		≥40%	
Change in percent of hospitals with supply/staff shortages	≤-10%	-9% – -5%	-4% – 0%	1% – 4%	5% – 9%		≥10%	

- *These categories have been aligned with the Centers for Disease Control and Prevention's [Indicators and Thresholds for Community Transmission of COVID-19](#).
- Some dates may have incomplete data due to delays and/or differences in state reporting. Data may be backfilled over time, resulting in week-to-week changes. It is critical that states provide as up-to-date data as possible. Figures and values may also differ from state reports due to differing methodologies.
- Color threshold values are rounded before color classification.
- Cases and Deaths:** County-level data is from a CDC-managed aggregate county dataset compiled from state and local health departments; therefore, the values may not match those reported directly by the state. State values are aggregated data provided by the states to the CDC. Data is as of 13:02 EST on 03/12/2021. Minnesota reported a historical backlog of 891 cases; these are shown by date of report to CDC on 3/9.
- Testing:** The data presented represent viral COVID-19 laboratory diagnostic and screening test (reverse transcription polymerase chain reaction, RT-PCR) results—not individual people—and exclude antibody and antigen tests, unless stated otherwise. CELR (COVID-19 Electronic Lab Reporting) state health department-reported data are used to describe county-level viral COVID-19 RT-PCR result totals when information is available on patients' county of residence or healthcare providers' practice location. HHS Protect laboratory data (provided directly to Federal Government from public health labs, hospital labs, and commercial labs) are used otherwise. Because the data are deidentified, total RT-PCR tests are the number of tests performed, not the number of individuals tested. RT-PCR test positivity rate is the number of positive tests divided by the number of tests performed and resulted. For test positivity, last week data are from 3/3 to 3/9; previous week data are from 2/24 to 3/2; the week one month before data are from 2/3 to 2/9. For number of tests, last week data are from 2/27 to 3/5; previous week data are from 2/20 to 2/26. HHS Protect data is recent as of 13:04 EST on 03/12/2021. Testing data are inclusive of everything received and processed by the CELR system as of 19:00 EST on 03/11/2021. There are discrepancies between federal and state data on New Hampshire's and South Carolina's test positivity. These differences are being investigated.
- Hospitalizations:** Unified Hospitals Dataset in HHS Protect. These data exclude psychiatric, rehabilitation, and religious non-medical hospitals. In addition, hospitals explicitly identified by states/regions as those from which we should not expect reports were excluded from the percent reporting figure. The data presented represents raw data provided; we are working diligently with state liaisons to improve reporting consistency. Data is recent as of 10:06 EST on 03/12/2021.
- Hospital PPE:** Unified Hospitals Dataset in HHS Protect. This figure may differ from state data due to differences in hospital lists and reporting between federal and state systems. These data exclude psychiatric, rehabilitation, and religious non-medical hospitals. Hospitals explicitly identified by states/regions as those from which we should not expect reports were excluded from the percent reporting figure. Data is recent as of N/A.
- Skilled Nursing Facilities:** National Healthcare Safety Network (NHSN). Data report resident and staff cases independently. Quality checks are performed on data submitted to the NHSN. Data that fail these quality checks or appear inconsistent with surveillance protocols may be excluded from analyses. Data presented in this report are more recent than data publicly posted by CMS. Last week is 3/1-3/7, previous week is 2/22-2/28.
- County and Metro Area Color Categorizations**
 - Red Zone:** Those core-based statistical areas (CBSAs) and counties that during the last week reported both new cases at or above 100 per 100,000 population, and a lab test positivity result at or above 10.0%.
 - Orange Zone:** Those CBSAs and counties that during the last week reported both new cases between 50–99 per 100,000 population, and a lab test positivity result between 8.0–9.9%, or one of those two conditions and one condition qualifying as being in the "Red Zone."
 - Yellow Zone:** Those CBSAs and counties that during the last week reported both new cases between 10–49 per 100,000 population, and a lab test positivity result between 5.0–7.9%, or one of those two conditions and one condition qualifying as being in the "Orange Zone" or "Red Zone."
- Shortages:** Unified Hospitals Dataset in HHS Protect. These data exclude psychiatric, rehabilitation, and religious non-medical hospitals. Includes hospitals currently reporting a staffing shortage. Low supply is defined as a hospital reporting they are not able to maintain a 3-day supply of N95s, face masks, gloves, gowns, or eye protection. Data is recent as of N/A.
- Vaccinations:** [CDC COVID Data Tracker](#). Data includes the Moderna, Pfizer BioNTech, and J&J/Janssen COVID-19 vaccines and reflects current data available as of 14:21 EST on 03/12/2021. Data last updated 06:00 EST on 03/12/2021. Persons who are fully vaccinated include those who have received both doses of the Moderna or Pfizer-BioNTech vaccine as well as those who have received one dose of the J&J/Janssen vaccine. Allocations are made pro rata (equal based on population) from which jurisdictions are then to order. Because COVID-19 vaccines available in the U.S. are authorized only for persons ≥16 years of age (Pfizer-BioNTech) or ≥18 years of age (Moderna and J&J/Janssen), currently few persons under age 18 are being vaccinated; this group represents ~22% of the U.S. population and the percentage varies by jurisdiction.